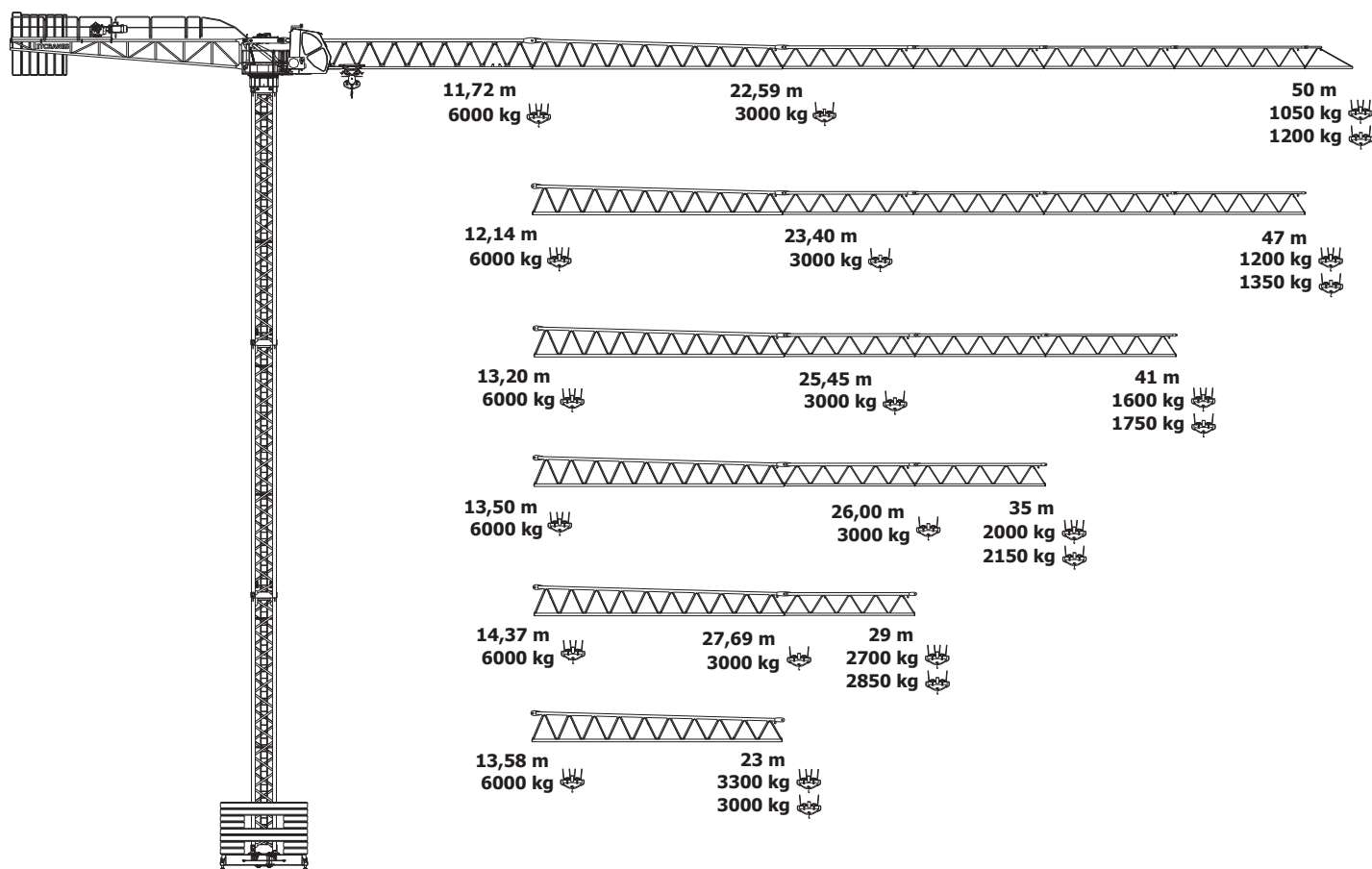


## GRUA TORRE | TOWER CRANE «FLAT-TOP»












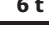

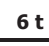
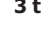



**EN 14439 C25  
FEM 1.001 A3**

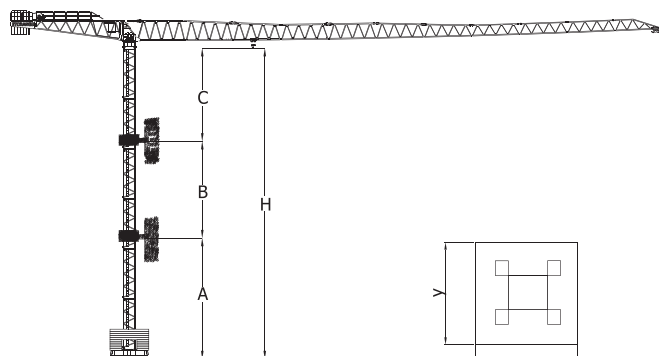
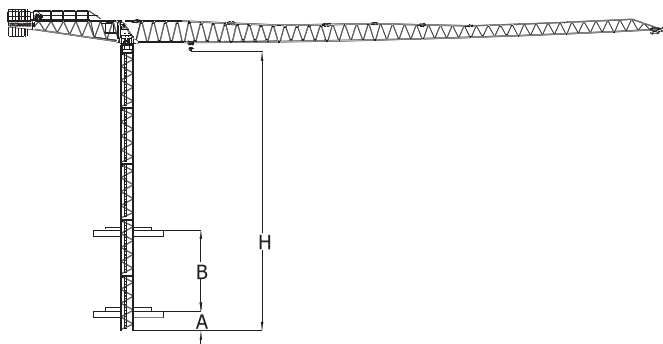
As características do produto estão sujeitas a alterações sem aviso prévio. As fotografias e/ou desenhos deste catálogo são meramente ilustrativos. O produto é vendido sempre acompanhado por um manual com instruções de manuseio correto. As regras descritas no manual devem ser rigorosamente seguidas a fim de evitar acidentes que possam resultar em ferimentos graves ou morte. A única garantia aplicável ao produto é a garantia escrita pelo fabricante, que se aplica exclusivamente ao produto vendido. Os produtos e serviços descritos neste catálogo podem conter marcas registadas, serviços especializados ou nomes comerciais do fabricante e/ou seus representantes em Portugal, ou noutros países, e todos os direitos estão reservados.

Product specifications are subject to change without notice or obligation. The photos and/or drawings in this catalogue are for illustrative purposes only. The product is always sold accompanied by a manual with instructions for proper handling. The rules described in the manual must be strictly followed in order to avoid accidents that may result in serious injuries or death. The only warranty applicable to the product is the warranty written by the manufacturer that applies exclusively to the particular product sold. Products and services listed in this catalogue may be trademarks, service marks or trade-names of the manufacturer and/or its subsidiaries in Portugal, or other countries, and all rights are reserved.

### DIAGRAMA DE CARGAS | LOAD DIAGRAM

						m	11	17	23	29	35	41	47	50
3 t			22,59 m	t	3,00	3,00	2,94	2,27	1,83	1,52	1,29	1,20		
			21,45 m	t	3,00	3,00	2,77	2,10	1,67	1,37	1,14	1,05		
			11,72 m	t	6,00	3,92	2,77	2,10	1,67	1,37	1,14	1,05		
3 t			23,40 m	t	3,00	3,00	3,00	2,36	1,91	1,59	1,35			
			22,26 m	t	3,00	3,00	2,89	2,20	1,75	1,43	1,20			
			12,14 m	t	6,00	4,09	2,89	2,20	1,75	1,43	1,20			
3 t			25,45 m	t	3,00	3,00	3,00	2,59	2,10	1,75				
			24,25 m	t	3,00	3,00	3,00	2,43	1,94	1,60				
			13,20 m	t	6,00	4,51	3,19	2,43	1,94	1,60				
3 t			26,00 m	t	3,00	3,00	3,00	2,66	2,15					
			24,82 m	t	3,00	3,00	3,00	2,50	2,00					
			13,50 m	t	6,00	4,62	3,28	2,50	2,00					
3 t			27,69 m	t	3,00	3,00	3,00	2,85						
			26,48 m	t	3,00	3,00	3,00	2,70						
			14,37 m	t	6,00	4,97	3,53	2,70						
3 t			23,00 m	t	3,00	3,00	3,00							
			23,00 m	t	3,00	3,00	3,00							
			13,58 m	t	6,00	4,66	3,30							

### OUTRAS CONFIGURAÇÕES | OTHER CONFIGURATIONS



**i** Grua trepadora  
Climbing crane

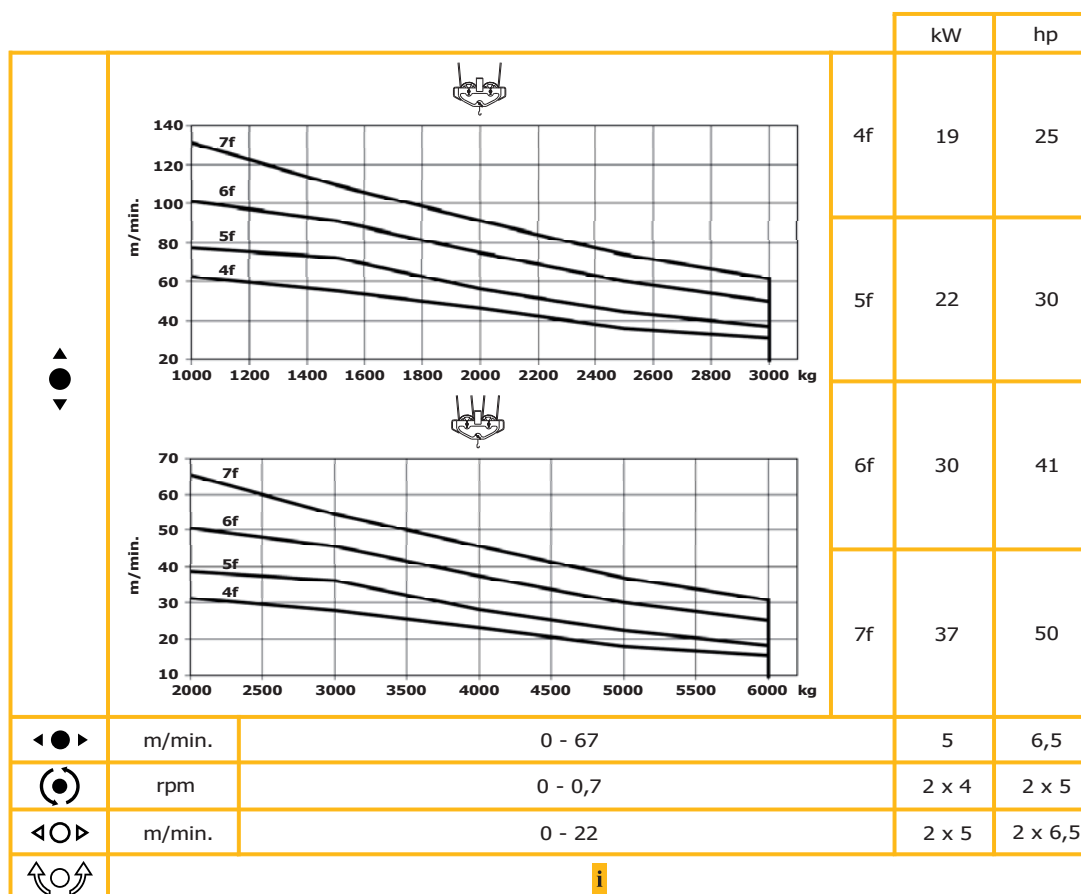
**i** Grua amarrada  
Anchored crane

**i** Consulte-nos  
Consult us



## IT tf 80-6 115Lc

### MECANISMOS | MECHANISMS



400V (+6% -10%) 50/60Hz   4f - 40kVA   5f - 44kVA   6f - 54kVA   7f - 63kVA	2000 / 14 / CE

<b>Elevação</b> Hoisting	<b>Distribuição</b> Trolleying	<b>Rotação</b> Slewing	<b>Translação</b> Travelling	<b>Translação</b> Travelling	<b>Tensão</b> Voltage	<b>Diretiva ruído</b> Directive noise



**IRMÃOS TAVARES 2 - Fabrico de Gruas, Lda.**

CONCEÇÃO, FABRICO E COMERCIALIZAÇÃO DE MÁQUINAS PARA A CONSTRUÇÃO CIVIL

www.irmaostavares.com

