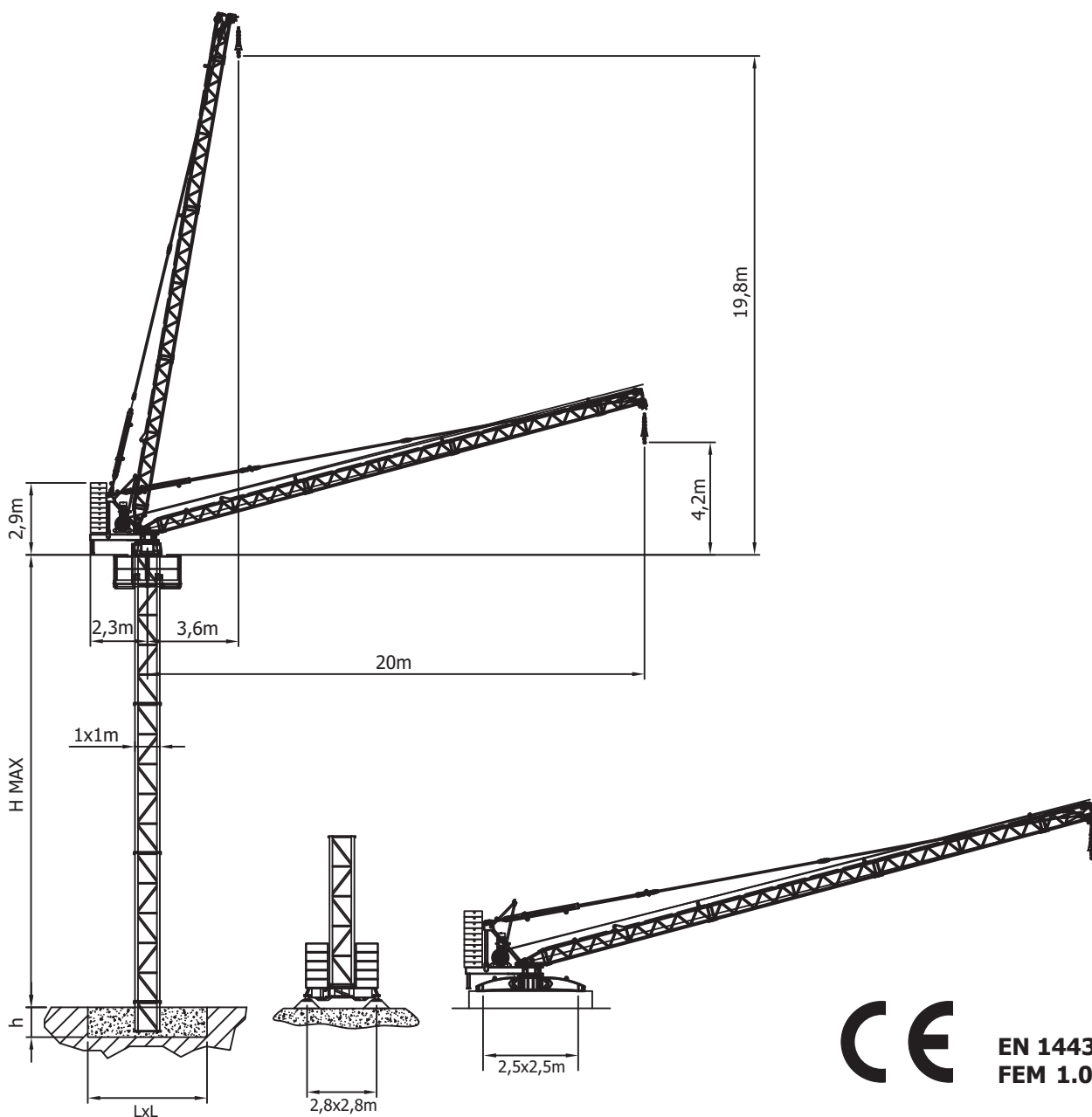


## GRUA TORRE | TOWER CRANE «LUFFING»





**EN 14439 C25  
FEM 1.001 A3**

As características do produto estão sujeitas a alterações sem aviso prévio. As fotografias e/ou desenhos deste catálogo são meramente ilustrativos. O produto é vendido sempre acompanhado por um manual com instruções de manuseio correto. As regras descritas no manual devem ser rigorosamente seguidas a fim de evitar acidentes que possam resultar em ferimentos graves ou morte. A única garantia aplicável ao produto é a garantia escrita pelo fabricante, que se aplica exclusivamente ao produto vendido. Os produtos e serviços descritos neste catálogo podem conter marcas registadas, serviços especializados ou nomes comerciais do fabricante e/ou seus representantes em Portugal, ou noutros países, e todos os direitos estão reservados.

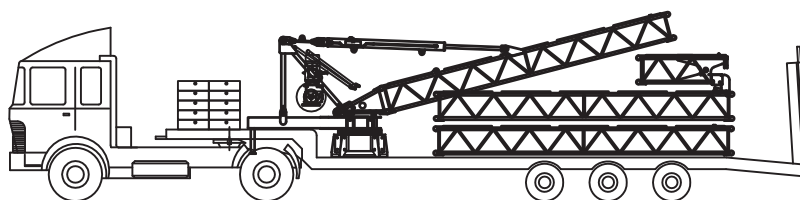
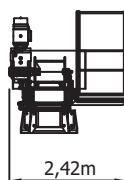
Product specifications are subject to change without notice or obligation. The photos and/or drawings in this catalogue are for illustrative purposes only. The product is always sold accompanied by a manual with instructions for proper handling. The rules described in the manual must be strictly followed in order to avoid accidents that may result in serious injuries or death. The only warranty applicable to the product is the warranty written by the manufacturer that applies exclusively to the particular product sold. Products and services listed in this catalogue may be trademarks, service marks or trade-names of the manufacturer and/or its subsidiaries in Portugal, or other countries, and all rights are reserved.

### DIAGRAMA DE CARGAS | LOAD DIAGRAM

4 Cabos   Ropes 												
Altura   Height (m)	4,2	6,8	9,8	12	13,7	15	16,4	17,4	18	18,4	19,8	
Lança   Jib (m)	20	19	17,6	16,2	14,6	13,1	11	9,6	8,6	7,6	3,6	
Carga   Load (kg)	1000	1105	1270	1470	1700	2000	2500	3000	3400	4000	4000	

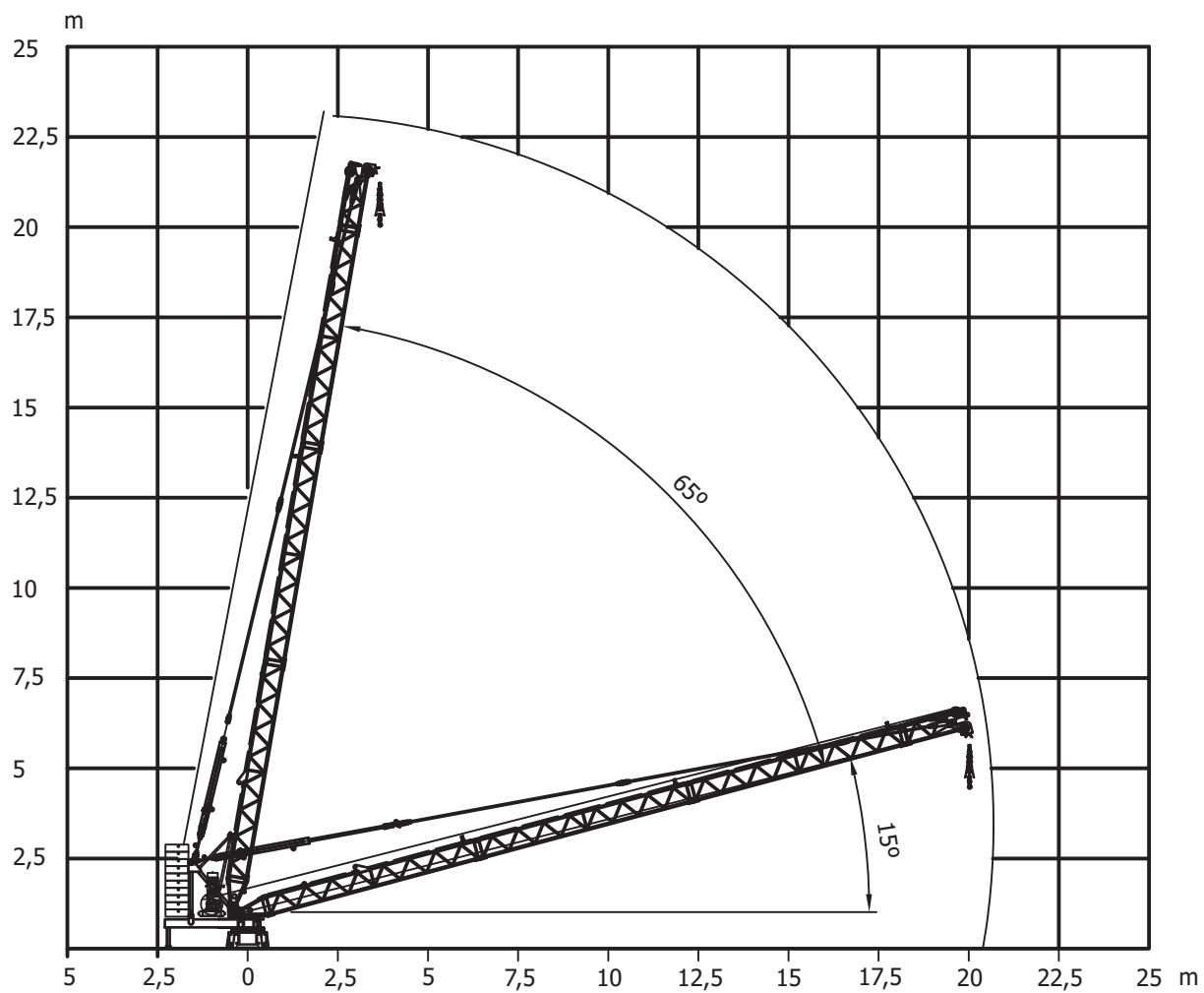
2 Cabos   Ropes 											
Altura   Height (m)	4,2	6,8	9,8	12	13,7	15	18,2	18,9	19,1	19,8	
Lança   Jib (m)	20	19	17,6	16,2	14,6	13,1	8	6	5,5	3,6	
Carga   Load (kg)	1000	1105	1270	1470	1700	2000	2000	2000	2000	2000	

### TRANSPORTE | TRANSPORT







Peso da grua   Crane weight	4000 kg
Peso dos contrapesos   Counterweights weight	5500 kg


### EREÇÃO | ERECTION









## IT It 20-4 115Lc

### MECANISMOS | MECHANISMS

				kW
	m/min.	0 - 40	0 - 20	11
	ton.	1,0	2,0	
	m/min.	0 - 20	0 - 10	
	ton.	2,0	4,0	
	sec.	70		7,5
	rpm	0 - 0,9		3

	kVA
400V (+6% -10%) 50/60Hz	27kVA

						
<b>Elevação</b> Hoisting	<b>Ereção</b> Erection	<b>Rotação</b> Slewing	<b>Translação</b> Travelling	<b>Translação</b> Travelling	<b>Tensão</b> Voltage	<b>Diretiva ruído</b> Directive noise



**IRMÃOS TAVARES 2 - Fabrico de Gruas, Lda.**

CONCEÇÃO, FABRICO E COMERCIALIZAÇÃO DE MÁQUINAS PARA A CONSTRUÇÃO CIVIL

www.irmaostavares.com

